

# Scribblings

...from the Rocky Mountain Philatelic Library

Roni Mitchell, Editor



Ellengail Beuthel, Librarian

Vol. 21 - No. 1  
www.rmpldenver.org

2038 South Pontiac Way, Denver, CO 80224  
303.759.9921

January-February 2013  
Email - rmpl@qwestoffice.net

## IN THIS ISSUE

The annual report ...

How the Library Serves Collectors .....	1
Library is Active with Youth .....	3
RMPL Now Printing for Seven Societies and Clubs .....	4
Book Review: <i>Handbook of the Stamps of Cuba</i> .....	5
RMPL Board Meeting Summary .....	6
Periodical Pickin's: British Caribbean Philatelic Journal .....	7
Obituary: N. Littlefield.	7
A Philatelic Journey to London .....	8
	
Fakes: A Curious Cover .....	10
RMPL Speakers Working with DU.....	10
2nd Saturday Programs .....	11
What's New on the Shelves .....	12
We Love Our Volunteers!.....	13
Club News .....	14
RMPL Stamp Sale.....	14
New Members .....	15
Donations .....	15
Show News.....	15
Calendar .....	16

## How the Library Serves Collectors

By Sergio Lugo, RMPL President

One of the tougher writing assignments for me as president is the State of the Library message. That's because it calls upon me to identify and enunciate laudatory aspects of the prior year's operations, as well as future "pot holes" with which we may need to deal. Into that mix is thrown a lot of statistics, fiscal data, and other accomplishments that can be quantified, and they become tedious in their repetition from year to year.

So I decided on a different approach this time. To wit, instead of my addressing these aspects of the RMPL's operations, why not have members talk about different operations that they think are worth noting. A host of such members were called upon to provide their insight. I hope you enjoy their perspectives.



The Board of Directors and the Librarian: (left to right, back row) Bob Blatherwick, Dave Weisberg, Jim Kilbane, John Bloor, Don Beuthel, Paul Lee; (front row): Sergio Lugo, Ellengail Beuthel, Dalene Thomas, Don Dhonau. Steve McGill is not pictured.

### ON THE LIBRARY AS A TROVE OF RESEARCH MATERIAL

Many of you know our good friend Tom Suprenant, a member of the RMPL since its first or second year. Tom had never been a member of organized philately anywhere. He'd been collecting as early as the year 1944, but only heavily after 1980.

Tom is known as a thoroughly knowledgeable U.S. specialist, and leads the Thursday afternoon crew in "expertizing" U.S. stamps.

He commented, "The catalogs are invaluable, and the historical content and explanations of the RMPL's books and catalogs is outstanding."

(continued)

Insofar as Colorado is concerned, he can always find anything he's looking for on regular mail and on Colorado railroad post offices (RPOs).

For the library's holdings of U.S. material, he has been amazed at the growth since the days of our original Peoria Street location 19 years ago. He is also amazed at the vast amount of information he can find.

One of the more delightful aspects of the RMPL is the camaraderie, particularly with like minded souls who share Tom's strong research interest in anything U.S. on Thursday afternoons, including RPOs, precancels, press sheets, postal stationery, and the list goes on.

### **ON THE LIBRARY AS A STAMP STORE**

Marvin Albery is one of our newest members, having joined last October. The day he was interviewed for this article was his third visit to the RMPL through mid-November. Marvin began collecting in 1960, but most intensively after 2007.

He commented: "I was overwhelmed! Even to the extent of computer technology. I'm computer illiterate, but so much of the library's resources are so tied into computers, that I may actually begin becoming familiar with them."

As a worldwide collector, and also as a U.S. collector, he's running up against the problem many of us face, namely that it's more and more expensive. Therefore, if the RMPL helps him to specialize in specific countries or stamp specialties, it will have proven to be a big help to him.

Marvin has already found it helpful in his chief regard of expense; he's delighted to see stamps at the intermediate range of his affordability, but better yet lower end material, at very reasonable prices that dealers cannot afford to stock.

At this point his focus is on stamps, but he is anxious to begin acquiring the knowledge associated with the RMPL's literature and research holdings.

### **ON THE LIBRARY'S SPECIALTY SECTIONS**

Dasa Metzler is a long-standing member of the RMPL, devoting extraordinary time and attention to two of the RMPL's special holdings for more than the past decade.

The first is her devotion to topical stamps and covers and, second, is her devotion to all Judaica related material. Both of these areas have been significantly expanded since the RMPL's early days when she began integrating her specialty interests into the library and began securing reading material for our stacks.

She continues to do so, as Dasa has incorporated material from the late Mark Vainer's research, and has supervised a variety of volunteers in maintaining those two specialty holdings.

Her helpers have included Ellice Gellerman, Roma Schultz, Paul Stewart, and Lois Nadler.

Dasa writes: "Maybe you have a special topic about which you would like more information. The RMPL has a vast amount of such literature available, as well as topically oriented journals and periodicals.

"Regarding stamps, my volunteers and I sort out thousands of them by topically related themes. Several of those themes have been cleaned out and replenished through the years.

"That topical section includes: stamps; labels, covers; aerograms; and postal stationary.

"All philatelic material is well organized and covers nearly 200 topical subjects, all represented on our shelves.

"My other area of specialization is in its fifth year of development. It consists of all "Judaica" related materials.

"This has been a labor of love for me as an Israeli collector, knowing full well that it is the only one of its kind in the various philatelic libraries, or for that matter in numerous public libraries.

"This is one area that can use dedicated volunteers for projects that are still on the drafting boards. "Judaica" currently includes 25 albums of Jewish personalities from throughout the world (as reflected on stamps), the Five Books of Moses (the Torah or the Pentateuch), three volumes of Synagogues from throughout the world, and two volumes devoted to The Holocaust, the Israeli-Arab Conflict and three volumes of Judaic labels."

### **ON THE LIBRARY'S SERVICES**

As a view from the front desk ...

Paul Albright, former editor of *The Posthorn*, the journal of the Scandinavian Collector's Club, has been a member of the library for more than a decade. During those 10 years, he and Roger Cichorz have faithfully made the round trip of 90 miles from Boulder to man the RMPL's front desk on Wednesday of each week.

Because of that stint of service, a special recognition award was recently given to Paul.

Now he has also assumed responsibility for the RMPL's vertical files.

Paul made a list of some of his Wednesday experiences:

- Collectors are busy scouring the "sales wall" for stamps and covers at reasonable prices.
- One collector systematically examines dozens of journals and periodicals for information on his special interest.
- An APS-certified judge is returning a number of library books used to prepare him for judging at a forthcoming exhibition.
- Other collectors check out books for their philatelic research.
- A telephone caller has inherited a collection or has a handful of stamps and is seeking answers as to their value, or how to dispose of this material.
- Donations of stamps, covers, albums, catalogs, and collecting supplies arrive from members and non-members.
- Recently acquired books, journals, catalogs, and articles are catalogued and shelved in the main library and by the specialty libraries that are hosted by RMPL.

- Some of RMPL's many volunteers pick up stamps for sorting by country or topic while others return their lots to be placed on sale.
- Photocopy machines are turning out the next issue of Scribblings or a catalog for an upcoming auction.
- There are discussions and progress reports on digital scanning of specialized library material.
- Meanwhile, club leaders are preparing for meetings and programs held regularly in RMPL's "annex" next door.
- It all makes for a busy and worthwhile time learning about and supporting our hobby.

### ON THE LIBRARY'S GROWING SERVICE OPTIONS

The number of RMPL services offered today and in the coming year are a far cry from the single one we offered

when we opened our doors 19 years ago.

New ones we'll offer will be discussed in future pages of *Scribblings*, and I most earnestly hope that many of you will benefit from them and offer to assist on those as they evolve.

In closing, there is one statistic we can't leave out of a year-end report. We had 2,844 visitors who signed the register by the front door this year. We estimate at least another 25% did not sign the register, many of them people who attended meetings in the annex.

80% of the membership visited for an average of six visits per member.

The sign-in statistics also show each of our front desk volunteers worked an average of 22 days, and put in 68 hours. The heart of the library continues to be its volunteers. A sincere thank you to them.

And we wish everyone a wonderful 2013.

*Sergio*

## Library was Active with Youth during Stamp Collecting

By Don Dhonau

October, "Stamp Collecting Month," gave the RMPL youth program two opportunities for outreach. For the second and third years respectively, two-frame exhibits were displayed at the Highlands Ranch and University Park post offices on the subject of "FIRSTS" in U.S. and worldwide postage stamps. The exhibits were well received, though only 33 children entered the stamp design competition associated with them.

However, 115 children entered a similar competition/event at the Highlands Ranch (Arapahoe County) Public Library!

Our thanks go to Cindy Williams at the library, RMPL member Gabe Montoya and Station Manager Trudy Widmayer at University Park and Manager John Douglas at Highlands Ranch.. Thanks to you at the RMPL who helped Don Dhonau put this project together!

Don, Dan Nieuwlandt and Tim Heins are planning hard for the youth program in 2013. (*Editor's note: Let them know if you can help!*)

The Metro Denver Youth Stamp Collecting Club meets at the library the third Saturday of every month beginning at 9:30. Novice or experienced, all children are welcome.



Sisters, Sierra and Savannah, look at the exhibit and entries from the post offices. The frames were set up in the meeting room at the RMPL.



Five year-old Bella entered this design. You have to love the hammock!

The RMPL is open six hours a day, six days a week.

# RMPL Now Printing for Seven Societies and Clubs

By Ron Mitchell

“Zip, whirrrr, ka-thump, plop,” goes the Xerox color production copier. If you’re near the library annex, those are the sounds you will hear frequently these days as the machine cranks out eight serial publications, including *Scribblings*.

The machine rolls along and takes only 15 to 35 seconds to crank out each copy of the publication, depending on how many pages it has.

The library’s president, Sergio Lugo explained that the acquisition of the new copier provides an opportunity to help other clubs and organizations with the printing of their journals and newsletters, and while the library makes a modest profit, the groups receive high quality publications.

- *The Philatelic Beacon*, journal of the Lighthouse Stamp Society.

During the printing process, the library provides someone to make sure the job goes smoothly, but everything else is up to the local representatives of the societies, who must be members of the RMPL.. They provide the publication in a digital format, stay with the machine during printing, and are responsible for the mailing to members of their groups.

The local organization’s “publishers” are happy with the arrangement.

David Reitsema, the editor of *El Quetzal*, said the improvement in the journal is stunning, and member response and approval is overwhelmingly positive. He also



The publications, shown above, are:

- *The Colorado Chapter News*, official newsletter of the Colorado Chapter of the Post Mark Collectors Club.
- *The Colorado Postal Historian*, journal of the Colorado Postal History Society.
- *El Quetzal*, journal of the International Society of Guatemala Collectors.
- *Europa News*, bulletin of the Europa Study Unit of the American Topical Association.
- *The GBCC Chronicle*, quarterly publication of the Great Britain Collector’s Club.
- *Journal of Cuban Philately*, from the International Cuban Philatelic Society.

gave accolades to the library, pointing out that making the copier available is a wonderful example of how significant the RMPL is in building up and supporting our hobby.

Dalene Thomas, editor of *The Philatelic Beacon* said since her society is getting such a good deal, she may expand the journal.

Steve McGill and Jeff Modesitt are responsible for the Great Britain Collector’s Club *Chronicle*, a 32-page journal that goes out to 300 members in the US, Europe, Latin America and Japan. They say they are thrilled and delighted with the results.

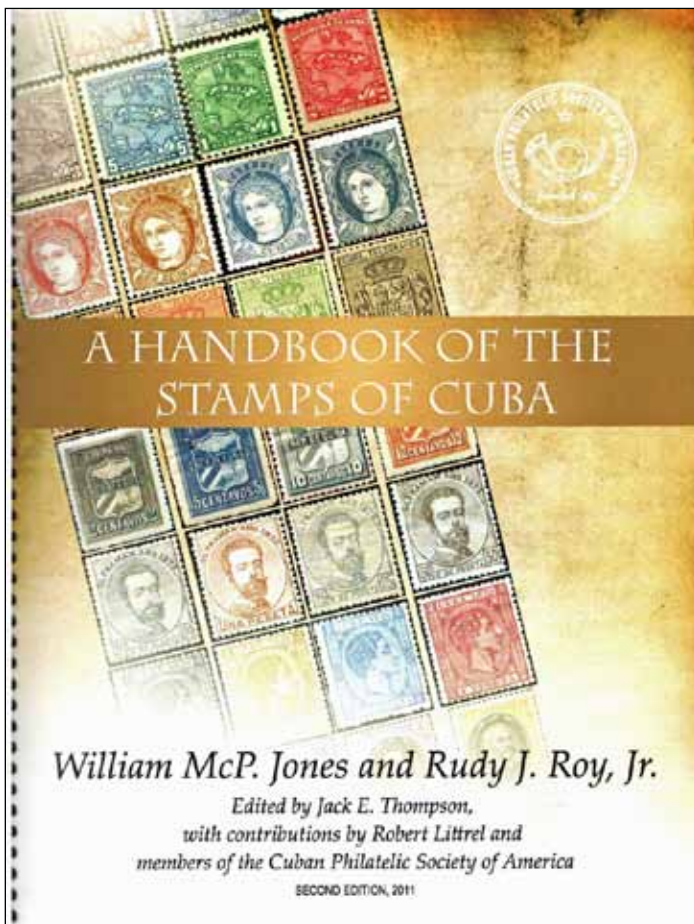
All of the publications shown were printed at the library during the last three months of 2012. We look forward to continuing the program, with the hope that the process goes as smoothly as it has begun.

**A Handbook of the Stamps of Cuba, 2nd edition, by William McP. Jones and Rudy J. Roy, Jr. Published by the Cuban Philatelic Society of America, 2011. Price is \$70.00 to CPSA members, \$80.00 to nonmembers. Orders and inquiries should be directed to the CPSA at P.O. Box 141656, Coral Gables, FL 33114. (<http://www.cubapsa.com/>)**

Cuba has a long philatelic history, including at least one American Airmail Society convention there in the 1930s and early mail rocket flights in 1939. However, to many collectors, Cuba and Cuban stamps remain a mystery, largely due to the United States embargo of Cuban goods since February 7, 1962.

There is still much confusion about whether it is legal to import, buy, sell, or even possess Cuban stamps. However, in the 2009 edition of the Scott catalogue (Vol 2, p. 598), "... according to ... the Treasury Department, used Cuban stamps can be imported and sold without limitation and unused stamps may be imported for personal use, but not resold." Scott lists prices for both mint and used stamps from 1855 to the present.

U.S. collectors should feel free to collect Cuban stamps,



and this handbook is another reason to consider it.

The first edition of the handbook was issued in three parts from 1982 to 1988. These have now been revised, and are published here as a single volume.

Part I covers the Spanish Dominion (1855-1898). Part II is about the U.S.A. administration (1898-1902) and Part III is titled The Republic (1902-1961).

The period from the end of the First Republic and assumption of power by Fidel Castro (and the beginning of the U.S. embargo) to the present is not discussed. Although the Scott catalog appears to have a complete listing of these stamps, it is not equivalent to a specialized handbook and the Castro-era stamps are among those most readily available to many collectors. A history of the philately of the Castro period would be a useful addition for a future edition.

Parts I and II begin with background about the postal service during the indicated periods. The opening section of Part III contains some of the same information but also includes "general information" about booklets, coils, stamp colors, and many other subjects including the numbering system devised by the authors.

New numbering systems are often a feature of specialized handbooks and catalogs since there are frequently varieties not included in more general catalogs. It would be helpful, though, if the authors had provided a concordance relating their new numbers to one of the more widely used catalogs.

All sections include descriptions of the postage and postal stationery issues of the period with illustrations in color. Telegraph stamps, cinderellas, fakes and forgeries, official seals and other topics are included in one or more sections as appropriate. While the descriptions of the fakes and forgeries are well done, having illustrations of the significant differences would be even better.

This is not a catalog and no pricing or grading information is given. The handbook is in English. While this is not a problem for most users, some collectors would benefit from having at least the explanatory text in both Spanish and English. The Table of Contents is well done and very helpful, in lieu of a subject index.

This handbook is an excellent source for information about the philately of Cuba up to the revolution in 1961.

The only significant shortcoming is the absence of coverage of Cuban philately from 1961 on. Although it is designed primarily for more advanced collectors, everyone interested in the subject can learn from it.

I strongly recommend this to anyone interested in Cuban philately. The book is available on the shelves at the RMPL.

*John Bloor*

# RMPL Board Summary

## Meeting of November 17, 2012

All board members were present, as were Roger Rydberg and Ron Mitchell.

### TREASURER'S REPORT

The library's financial report, through the end of October, was reviewed and approved. We are financially sound after the very successful results of the bulk lot auction.

### OLD BUSINESS

- The Memorandum of Agreement for printing by individual societies has been modified in paragraph 5, per the revision requested at the August board meeting.
- Auction results were presented on a spreadsheet that tracked activity for six years. To wit: \$26,700 was sold, representing 277 lots (or 98% of lots), with 21% of successful bids coming from mail bidders, and an average of \$88 per lot with an average of 4.12 bids per lot.
- An operational means of issuing donation letters has been worked out between Don Dhonau and Bill Platche, for which we are particularly pleased.
- A simplified viewer has been found for the *This Was Colorado* project, enabling Travis Searls to begin finalizing the search mechanism for the 4,000 postcards in this collection, 250 of which have been scanned. It is hoped that the first preview of the web based search program will be demonstrated at the January 17th RMPL board meeting. If successful, it will be uploaded to our webpage, with volunteers again called upon to scan the remaining 14 volumes.
- The Secretary of State of Colorado will be contacted with revisions to the library's articles of incorporation document, last done in 1994.
- The Xerox machines are working very well, with bugs finally resolved with the production machine. Seven societies are printing their journals using the machine, as described on page 4 of this issue.
- All details of the volunteer party were resolved. The party is scheduled for December 7 at White Fence Farm to recognize the work of 80 volunteers who contribute thousands of hours annually to keeping the RMPL open and functioning.
- It was agreed to place several names on bronze plaques on the RMSS exhibit frames.
- future months.
- The projected final budget for 2012 and the initial budget for 2013 were reviewed. Both will be finalized at the January 17, 2013 RMPL board meeting. The budgets are available to anyone requesting them. At present, it looks like the RMPL will finish 2012 with approximately \$110,000 in income and \$90,000 in expenses (absent the revisions mentioned below). The projected 2013 budget anticipates income of \$110,000, but expenses increasing to roughly \$108,000.
- Board member Steve McGill gave a report on his visit to the Royal Philatelic Library of London. More details are on pages 8 and 9. Incidentally, anyone with baseball related philatelic material willing to donate it, is welcome to talk to Steve who will be happy to present that material to one of his hosts on the trip, an unlikely British baseball fan.
- The RMPL will begin using QuickBooks for our increasingly complex financial management operations.
- We will be housing a special collection of complete Castro era Cuban philately and FDCs.
- The RMPL board agreed to paying down the mortgage by \$25,000. That paydown will reduce the mortgage debt to the \$136,000 vicinity, saving nearly \$22,000 in interest payments and shaving another two years off the current length of the mortgage. Payoff is projected in December 2020.
- The board agreed to make a \$1,000 donation for World Stamp Show NY to be held in 2016.
- A \$1,000 donation is being explored for the Western Philatelic Library in Sunnyvale, California. The WPL is losing its home of many years in the public library building and is being confronted with a potentially very large mortgage to secure new quarters. The RMPL board decision is pending some answers to questions sent to the WPL. RMPL members Marc Gonzales and Stephen Nadler have volunteered their very capable real estate services and analytical abilities to the WPL, an offer that has already been taken up via e-mail consultation on numerous matters.
- \$3,000 was appropriated for the RMPL's 4th book, *Colorado RPOs*, by Mike Maselli. Those funds will probably be expended over the next two library fiscal years, 2013 and 2014.

The next board meeting will be Thursday, January 17, 2013 at 7 p.m. in the library annex. This will be the annual meeting required of all corporations, with reports from officers and committees. All members are invited.



### NEW BUSINESS

- The library will be embarking on video instruction via the internet (probably You Tube) and the webpage in the next 6 months under the direction of new member Joe LaNotte. More to be reported in

## British Caribbean Philatelic Journal

by Sergio Lugo

Postal history and philatelically wise, imagine the palm covered, white beaches of the following within easy reach – Anguilla, Antigua, Bahamas, Barbados, Barbuda, Bermuda, British Guiana/Guyana, Br. Honduras/Belize, the British Virgin Islands, Cayman Islands, Dominica, Grenada, Jamaica, the Leeward Islands, Montserrat, Nevis, St. Christopher/St. Kitts, St. Lucia, St. Vincent, Trinidad & Tobago, and the Turks & Caicos Islands. If you can imagine those nearly equatorial islands and lands, then you'll enjoy this month's periodical pickins. Organized in 1960, the British Caribbean Philatelic Study Group has grown to include 450 members from throughout the world. Its news arm, *British Caribbean Philatelic Journal*, has likewise grown from a small newsletter to a polished journal presenting all those lands in a 28 page journal.

In its 52nd year of printing, the Journal is a superb example of a publication that attempts to do justice to all its multi-national interests. Articles span extraterritorial matters, to articles keenly focused on individual country stamp issues, to postal history of every kind.

In recent examples in the RMPL's holdings, Pan Am Airways was discussed, as were the silver jubilee issues among the islands, censorship, Anguilla, Nevis, Barbados, Trinidad, St. Lucia airmail, and St. Vincent airmails.

The variety of topics and country specific subjects strongly suggests that the Study Group has quite an active cadre of talented and informed writers with a vast repertoire of subjects at their fingertips. They are ably directed by a front page ad telling writers deadlines for submissions for its quarterly issues.

Forty eight years into its existence, in 2008, the Journal went to color adding excellent resolution scans and photos to its thoughtful, analytical, and informative narratives.

In addition to providing society reports after its main articles, the Journal apparently sustains itself with advertising from specialist dealers of the British empire. Those ads recently amounted to three full pages of in-depth solicitations for collectors of rarities as well as the more commonplace material.

The RMPL's holdings of the periodical span Vols. 2 to 4, and 42 to 48. The society's webpage is at [www.bcpsg.com](http://www.bcpsg.com). It provides a wealth of information, and illustrates one or two recent examples of its journal.



The fourth quarter 2008 issue of British Caribbean Journal was Vol. 48, No. 4, Whole No. 229.

Digital copies  
of all issues  
of *Scribbling* since  
January 2008 are  
available on the  
RMPL web page.

Visit the  
library  
online:

[rmpldenver.org](http://rmpldenver.org)



## OBITUARY

Neil Littlefield passed away on November 3rd. He was 81.

Neil was a front desk volunteer for three years and was always accompanied by his wife, Carla, who helped members and visitors to the RMPL navigate their way through the stacks and stamps of the library. He enjoyed collecting People's Republic of China, Japan, Canada, Great Britain, and the US.

Neil was a Professor Emeritus of Law at the University of Denver College of Law, and had a distinguished career.

He and his wife were fixtures at the library on many Saturdays. He will be missed.



Neil Littlefield  
1931 - 2012

## A Philatelic Journey to London

By Steve McGill, RMPL Board Member

I had the pleasure and honor recently of presenting to the Royal Philatelic Society (RPSL) and the Great Britain Philatelic Society (GBPS) on the topic of "Britain's Marvelous Machins – The Development and Use of Luminescent Compounds to Add an Identity to Definitive Stamps." This was a presentation that was an outgrowth of my own attempt to understand why the Great Britain Machin series has over 7,000 cataloged varieties. Phosphorescent and fluorescent compounds (luminescent substances) have a lot to do with the story and became the basis of my talks.



The St Pancras Hotel, Steve's base of operations in London.

Having originated from a chance 2010 dinner seating with Alan Moorcroft, then president of the RPSL, the talks in both venues became the basis for an extraordinary week in London. It started by meeting Tom Slemons, the world's preeminent Mulready expert, at the St. Pancras Marriott. The renovation of the 1867 train station and hotel was a delight

in itself with history at every turn.

The next day we went to the RPSL, a five minute drive away from the hotel. The meeting was arranged so that the exhibit material was put up in the main meeting room by 1 p.m. and then opened to members. This allowed a leisurely examination of the 108 exhibit pages I presented and also



Steve referred to his exhibit during his presentation to the RPSL. Members were given a four hour window before the presentation in which they could view the exhibit and talk to him.

afforded an opportunity for me to engage with members. There were many questions and comments during this time.

At 5 p.m., the formal presentation commenced with an introduction followed by my PowerPoint slides and commentary. As part of the background to the subject, I



Steve sat with RPSL President Brian Trotter while he fielded questions from members after his talk.

related the beginnings of the Denver Machin Club founded by Peter Adgie at the RMPL.

The day at the Royal concluded with two events. First, immediately following the presentation, a customary reception with wine and cheese was held. This was followed by dinner with Brian Trotter, his wife and Tom Slemons. David Beech, curator of the British Library Philatelic Collections, also joined us. David was kind enough to invite us to the British Library the following morning for a private tour of the collections.

The next morning, Tony Walker, Tom Slemons and I walked over to the British Library, across the street from St. Pancras. I expected a 45 minute visit, but David and his assistant Paul Skinner devoted five hours to showing us the many treasures of the library.

I had not previously been there, and was awe struck upon entering because the first thing a visitor is confronted with is a five-story high, glass encased book collection of King George III. KG-III may not have been all that adept at managing the colonies but he certainly had an eye for leather bound texts. Other artifacts such as the Magna Carta may be viewed, making the library a somewhat unexpected five-star attraction for tourists such as I.



King George III's books are housed in a bookcase about as tall as a five story building.

As part of our tour, we viewed the philatelic items in the main lobby of the library. These included two penny red plate 77's, a pair of Canada 12 pence black, an inverted Jenny with clear perfs all around and many other items.

After viewing items open to the public, David showed us several gems from his archives. One fascinating item was





*Dies used to make early embossed tax stamps which led to the American Revolution were shown to Steve in the British Library archives.*

a book containing registration copies of early embossed tax stamps. Of particular interest for me was the registration copy of the stamp that set off the “No Taxation Without Representation” movement in the American colonies, which would lead to revolution. David commented that there were a few unintended consequences to the issuance of that stamp.

My fourth day in London was spent with the Great Britain Philatelic Society. Tom Slemons, a Mulready collector, had also been invited to speak at the GBPS at



*Tom Slemons, David Beech and Paul Skinner chat before one of Steve's presentations.*

what had mutated into “American Day” where both of us spoke on British subjects.

The GBPS meets at the Grosvenor Auction facility on Strand in London. This is right above the Stanley Gibbons store – so what better place to have a stamp club meeting!

The format for presentation was similar to that of the Royal in that exhibit material was put up with members afforded an hour to look about.

This viewing was then followed by a 45 minute presentation with Q&A afterwards.

Michael Sefi is president of the Society and is also Keeper of the Queen’s Collection so it was an honor to receive from him an engraved glass

remembrance of the occasion. It turns out that Michael is also a baseball enthusiast (in the UK - rarer than penny-red plate 77's) affording us plenty of common ground.

Recounting this at the recent RMPL board meeting after my return, it was resolved that a baseball ‘care package’



*Michael Sefi, Keeper of the Queen's Collection and president of the GBPS presents Steve with an engraved glass memento.*

would be sent to Michael. This has duly been assembled thanks to the help of Sergio Lugo, Eric Carlson and Jim Lays with the package including an official Rockies baseball and a number of philatelic-baseball related stamps and covers.

This is an amazing hobby of which I am fortunate to be a member. During this short visit I met numerous people who made comments and, in three cases, returned to London with their own collections to show me avenues for my topic that I had not even considered. Davis Beech coached me on research strategies that have proven effective for others and I was able to meet up with friends from all over the UK – all in all, not a bad way to spend four days.



*The meeting room at the Royal was filled for Steve's presentation.*

Thanks to Michael Pitt-Payne for the pictures taken at the RPSL.

by Joe Lambert

## A Curious Cover

Prior to 1863, in most instances, mail needed to be delivered to and picked up from the post office. For a fee, persons bonded as carriers would perform this task- the fees were normally 1c, sometimes 2c. Thus one will encounter covers with an extra penny added to the normal postage- to cover the fee of the carrier. As well, many companies issued their own local stamps to indicate payment of the carrier fees. The need for this extra charge ended in 1863 when the post office began to provide delivery services, beginning in the major cities.

This cover (which someone wrote on to expose its little secret) was intended to show the use of Scott #63, the 1c stamp of 1861, to pay a carrier fee. If it were so, this would be a very nice cover, indeed. Recall that postage (including postal stationery) created before 1861 was demonetized in 1861 to keep this financial resource in southern post offices from falling into the hands of the Confederacy. A new series of stamps was issued to take the place of the 1857 series; this new series included #63 (earliest documented



*A cover with a 1¢ Scott #63, which was supposed to show payment of a carrier fee. As appealing as it may be, the accompanying article details how the cover could not be real.*

use August, 1861). So, except for the tiny inconvenience of a March 1861 date, we have a demonetized item of postal stationery whose delivery is being paid by a newly issued stamp. Too bad.....

Many cover creations are less obvious. Remember to verify that all the components of seemingly valuable covers fit together (or you can convince yourself that they don't fit for a reason).

I wish to one and all a happy New Year, free from fakes and forgeries!



## RMPL Speakers Working with DU

Library member Tim Heins is once again going to facilitate an eight-week course titled "World History in Postage Stamps" in connection with the Osher Lifelong Learning Institute (OLLI) through the University of Denver. Each two hour session will be led by an expert from the RMPL in various fields of worldwide philately.

Classes will be held at the Jefferson Unitarian Church, 14350 W. 32nd Ave. from the weeks of March 25 through May 17.

This is an opportunity to expand your stamp collecting knowledge.

Contact Tim at <timheinscpa@msn.com> for more information.



## SECOND SATURDAY PROGRAMS AT THE LIBRARY

Second Saturday programs are sponsored by the library and attract a friendly group of folks who are interested in a specific subject or who are interested in learning more about an area of philately that may be new to them. Contact Jim Kilbane if you would like to present a program.

The programs begin at 9:00 AM and are over by 10:00 AM.  
Doughnuts and coffee are complimentary and all are welcome.

**Begin 2013 with a treat for yourself!  
Plan to attend the Second Saturday Programs and  
support your fellow members as they tell about their specialities.**



### JANUARY 12, 9 a.m. *Stamp Montage Postcards* by John Bloor

Stamp montage postcards have the central image made from small pieces cut from postage stamps and glued to card stock, often with additional pictorial elements painted around the central design.

The most common cards are those made in China early in the 20th century, but cards are also known from Europe and the United States, and from more recent years.

The beauty and workmanship of the cards are among John's principal reasons for collecting them. He will show many examples and will tell what little is known about their history.



### FEBRUARY 9, 9 a.m.

#### *The Assassination of Franz Ferdinand* by Steve Schweighofer

This is a profusely illustrated philatelic program about the Austrian Archduke's fateful visit to Sarajevo, Bosnia, on June 28, 1914, his murder, and the memorial stamps issued.



*Left: Sophie, the wife of the archduke, with her husband. Center: The archduke on a semi-postal stamp issued by Bosnia and Herzegovina exactly three years after his death. Right: The archduke and his wife met a dignitary in Sarajevo minutes before the assassination.*

## WHAT'S NEW ON THE SHELVES?

## UNITED STATES

*Scott's U.S. Stamp Check List* (includes U.N.), for years 1978, 1980, and 1986

*Texas Post Offices*, by John J. Germann



*Durland Standard Plate Number Catalog, 2012*

## AFRICA

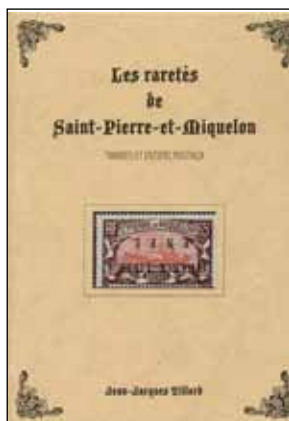
*Postal Service of the British Forces in Egypt 1932-1940*, compiled by John E.O. Hobbs

## EUROPE



*Manual de Iniciación para el Coleccionista de Sellos*, by Francisco Aracil

## NORTH AMERICA



*Les Raretés de Saint-Pierre-et-Miquelon, Timbres et Entiers Postaux*, by Jean-Jacques Tillard

## TOPICAL



*Analysis of Imprinting Devices Related to Tartu Space Club Covers, 1962 to 1978* (supplement to *Tartu Space Club Covers, 1962-1978*), by Jim Reichman

*Centro di Documentazione La Ghirada: Il Basket Nella Filatelia di Elio Tomassini*, by Stefano Benetton



*Checklist of Soviet Philatelic Items Related to Conquerors of the Cosmos Monument*, by James G. Reichman

*Olympex 2012: Collecting the Olympic Games*, published by the British Library

*Russians on the Moon and Philatelic Issues Related to Them*, by James G. Reichman

*Soviet and Russian Philatelic Items Related to Dogs in Space* (Philatelic Study Report 2-12-4), by James G. Reichman

*Standard Postmarks from the Baikonur Cosmodrome*, by James Reichman

*Tartu Space Club Covers, 1962-1978, Volumes 1 & 2* (includes a CD inside the back cover of vol. 2), by Jim Reichman

## MISCELLANEOUS

*The Bibliography of Current-Awareness and Retrospective Indexes* (as of 2010), by Brian J. Birch



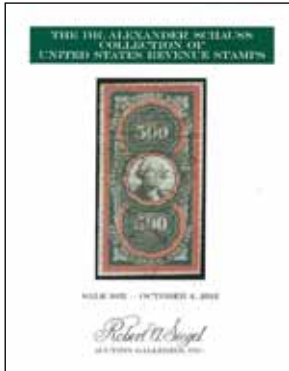
*May D&F Stamps News, 1979-1980 and 1980-1981*

*My Hobby is Collecting Stamps*, by Ernest A. Kehr

**AUCTION CATALOGS**

*British North America Stamps and Covers*, catalog for a Christie's auction March 1993

*The Collector's Series: United States, British Empire & Worldwide Postage Stamps and Postal History*, catalog for a Spink auction July 2012



*The Dr. Alexander Schauss Collection of United States Revenue Stamps*, catalog for a Robert A. Siegel auction, October 2012

*The Emperor Collection of Mexico Provisional Issues, 1856-76*, catalog for a Christie's Robson Lowe auction June 1992

*The Erich Koenig Collection of 19th and 20th Century Stamps and Covers of Mexico*, catalog for Sotheby's auction May 1995

*The Louise Boyd Dale and Alfred F. Lichtenstein Collections British Africa*, catalog for a Harmers of New York auction March 1991

*The "Mayflower" Collection of Select Quality Stampless Covers*, catalog for a Daniel F. Kelleher auction October 2012

*The Natalee Grace Collection of Used Stamps of the United States, Part Two: 1869 to Pan-American Issues*, catalog for a Robert A. Siegel auction September 2012

*The Salomon Rosenthal Collection of Mexican Maritime Mail*, catalog for Cherrystone auction, February 2008

*The Scarsdale Collection Part 8: United States Match and Medicine Stamps*, catalog for a Robert A. Siegel auction October 2012.



*United States and Canada Stamps and Postal History Including Collections and Accumulations*, catalog for a Mathew Bennett International auction September 2012

*The Westpex Sale*, catalog for a Schuyler Rumsey auction, April 2012

# We Love Our Volunteers!

Our annual thank you party for library volunteers was held at White Fence Farm in early December and all 80 volunteers were honored for their loyalty and service.

Here are some examples:



Each person in this group is involved in "Special Projects." For instance, Frank Leitz (far left), is merging three collections into a Scouting on Stamps special collection.



Tonny VanLoij (far left) is the library's master gardner and is responsible for the beautiful garden next to the Annex. His work is an example of "Extraordinary Services," which all seven people in the photo perform.



Ron Hill (right) was given a momento by President Lugo for his years of service as the editor of Scribblings.



**Return books on time...**

## CLUB NEWS

## U.S.S. Colorado Chapter of Ship Cancellation Society Needs a Boost

Faithful members of the *U.S.S. Colorado* Chapter of the Universal Ship Cancellation Society are looking for collectors who have an interest in their specialty.

The USCS is an 80 year-old national organization and is one of the oldest postal history specialty societies in the world. Its journal, the *USCS Log* is a high quality monthly magazine.



The focus of the group is postmarks and covers from all maritime services. This includes Navy ships of all countries, Marine Corps, Coast Guard, Navy bases, merchant ships with seapost and paquebot markings, related caches, and other naval memorabilia.



Cancel sought by members of the USCS are easily identified as part of the Naval Postal System.

If you have any interest in the Navy or Naval covers, the *U.S.S. Colorado* Chapter of the USCS is for you.

The club meets every other month on the second Saturday at 11:30 a.m. The next meeting will be January 12th.

Contact Frank Leitz at [fleitz@usbr.gov](mailto:fleitz@usbr.gov) or Jan Marie Belle at [denverjan@comcast.net](mailto:denverjan@comcast.net) for more information, or, just show up for the meeting..



## RMPL STAMP SALE

## Second Annual Fixed Price Country Lots Sale February 16, 2013 10 a.m.

By Dave Weisberg

After our successful country lots sale in February 2012, we have decided to hold a similar sale again on Saturday, February 16, at 10 a.m.

This year we have about 100 lots with an estimated total value of nearly \$11,000. The total sale price of these lots is about \$2,500 or about \$25 each.



A few of the lots in this year's fixed price country lots sale.

We expect that once again we will have a number of buyers lined up when we open the door. Since there was some confusion between buyers who wanted the same lots, this year you will be given a number as you enter. If multiple people want the same lot, the person with the lowest number gets to purchase it.

There will be a limit of five lots per number. In other words, if a buyer purchases five country lots, if he or she wishes to buy more, they may take another number and go to the back of the line and go through the process again.

The lots will be available for viewing on Friday, February 15, from 10 a.m. to 4 p.m.

For those who cannot make the sale, email or call the library with the lots you want at these fixed prices. At noon on the day of the sale, we will check any lots left and if the ones you want are still available, we will pull them for you.

As with our RMPL auctions we will accept cash, checks and PayPal.

Details of rules for the sale accompany the lot descriptions included as an insert with this issue of *Scribblings*.

A big round of thanks should go to Bill Crabbs for putting this sale together.

## NEW MEMBERS

The RMPL is pleased to welcome the following new members who have joined the library in the past two months.

**Preston Driggers, Golden, CO** - Collects postcards

**Clyde J. Homen, Hollister, CA** - Collects Portugal, Portuguese East Africa, and DPO's of San Benito County, California

**Mark Kelly, Highlands Ranch, CO**

**Carl J. "Jack" Nicoulin, Denver, CO** - Collects Canada and Germany

## DONATIONS

The library thrives on the enthusiasm and generosity of its members. The following members have made donations to the library over the past two months. We thank each and every one who has contributed.

Lew Barsky

Tim Bartshe

Dan Belisle

Jan Marie Belle

John Bloor

Steve Bonowski

Chris Shearer Cooper

George Custard

Suresh B. Damie

Murray Dryer

Donald Engelhardt

Jim Fredlund

Gary Gibson

Frank Huey

Longmont Stampers

Stan Luft

Sergio Lugo

Clark Lyda

Dasa Metzler

John Morris

Gawain O'Connor

Robert L. Ortega

Craig Passon

William Plachte

James Reichman

Owen Robb

Carl Roths

Richard Ruth

Scandinavian

Collectors Club

Travis Searls

Karl Stone

Andrew Wacinski

Richard Wilbert

Stephen Wineteer

Gerard Zschoche

## BOARD OF DIRECTORS MEETING

Thursday, January 17, 2013  
7:00 PM

All members are welcome!

## SHOW NEWS



**Friday, January 18**

11:30 a.m. to 7:30 p.m.

**Saturday January 19**

9 a.m. to 5 p.m.

## DO YOU LIKE OLD POSTCARDS?

Don't miss this!

## DENVER POSTCARD & PAPER SHOW

- Free parking
- Admission \$4  
(good for both days)

Jefferson County Fairgrounds  
Indiana and Highway 6.



## What's Happening at the RMPL...

Hours: Monday, Tuesday, Wednesday, Friday, Saturday 10 a.m. - 4 p.m.  
Thursday 2 - 8 p.m.. Closed Sundays and Holidays. Phone: (303) 759-9921

Meeting times and places sometimes change. It is best to call the library or the club to confirm the place and time. A calendar of reserved club times is kept by Operations Manager, Don Beuthel, at the library. Clubs should check the calendar regularly and notify Don of any changes or updates at (303) 755-9328. All requests to reserve meeting time and space other than those listed here must be approved and scheduled by Don well in advance.

### JANUARY 2013

- Jan 2** - Meeting - Aurora Stamp Club  
6:30 p.m. trading, 7:30 p.m. meeting
- Jan 5** - Meeting - 10 a.m.  
Scandinavian Collectors Club
- Jan 5** - Meeting - 1 p.m.  
TOPIC - Topical Philatelists in Colorado
- Jan 9** - Meeting - 7 p.m.  
Denver Germany Stamp Club
- Jan 10** - Meeting - 6:30 p.m.  
Denver Postcard Club
- Second Saturday at the RMPL**
- Jan 12** - 9 a.m.  
Program by John Bloor  
"Stamp Montage Postcards"
- Jan 12** - Meeting - 10 a.m.  
Mexico/Latin America Study Group
- Jan 12** - Meeting - 11:30 a.m.  
U.S.S. Colorado Chapter, USCS
- Jan 17** - Meeting - 7 p.m.  
RMPL Board of Directors  
All members are welcome!
- Jan 19** - Meeting - 9:30 a.m.  
Metro Denver Young Stamp Collectors Club
- Jan 20** - Meeting - 2 p.m.  
Great Britain & Commonwealth  
Collectors Club
- Jan 21** - **Closed, Martin Luther King Day**
- Jan 22** - Meeting - 7:30 p.m.  
Rocky Mountain Stamp Show Committee

### FEBRUARY 2013

- Feb 2** - Meeting - 10 a.m.  
Scandinavian Collectors Club
- Feb 2** - Meeting - 1 p.m.  
TOPIC - Topical Philatelists in Colorado
- Feb 6** - Meeting - Aurora Stamp club  
6:30 p.m. trading, 7:30 p.m. meeting
- Second Saturday at the RMPL**
- Feb 9** - Meeting - 9 a.m.  
Program by Steve Schweighofer  
"The Assassination of Franz Ferdinand"
- Feb 9** - Meeting - 10 a.m.  
Mexico/Latin America Study Group
- Feb 9** Meeting - 11 a.m.  
Rocky Mountain Aerophilatelists
- Feb 13** - Meeting - 7 p.m.  
Denver Germany Stamp Club
- Feb 16** - Meeting - 9:30 a.m.  
Metro Denver Young Stamp Collectors Club
- RMPL Stamp Sale**
- Feb 16**--Net Price Country Lots Sale - 10 a.m.
- Feb 17** - Meeting - 2 p.m.  
Great Britain & Commonwealth  
Collectors Club
- Feb 18** - **Closed, President's Day**
- Feb 23** - Meeting - 9:30 a.m.  
Postmark Collectors Club
- Feb 23** - Meeting - 1 p.m.  
Colorado Postal History Society
- Feb 26** - Meeting - 7:30 p.m.  
Rocky Mountain Stamp Show Committee

*Scribbings* is published bimonthly by the Rocky Mountain Philatelic Library, Ron Mitchell, Editor, 2038 S Pontiac Way, Denver, CO 80224. The Rocky Mountain Philatelic Library is a chartered Colorado nonprofit corporation and an IRS designated 501 (c)3 charitable organization. Membership subscriptions over that for the regular membership, and donations of appropriate philatelic materials, are deductible for U.S. income tax purposes.

#### RMPL BOARD OF DIRECTORS

President: Sergio Lugo - Operations Manager: Don Beuthel - Vice-President: Jim Kilbane  
Corresponding Secretary: Don Dhonau - Recording Secretary: Paul Lee - Treasurer: Bob Blatherwick  
Directors: John Bloor - Steve McGill - Dalene Thomas - David Weisberg.